



ECG Focus

JMR 2018; 4(6): 292
November- December
ISSN: 2395-7565
© 2018, All rights reserved
www.medicinarticle.com
Received: 28-11-2018
Accepted: 15-12-2018

The P Wave Inversion

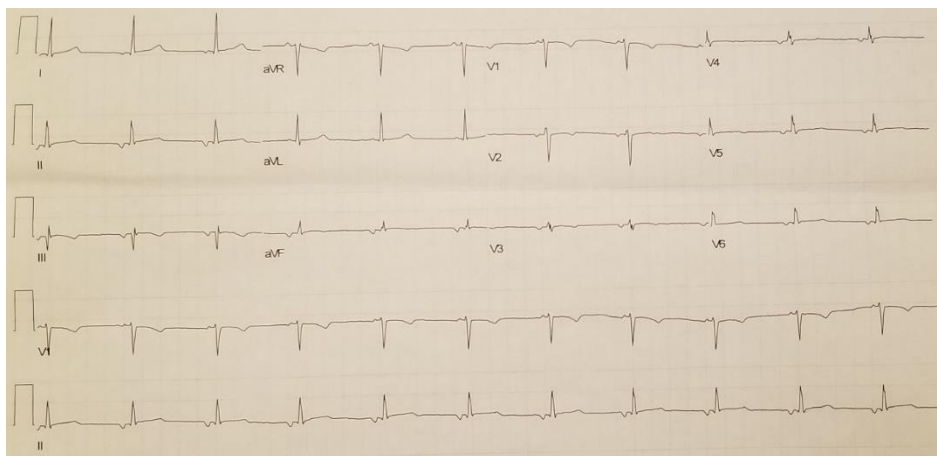
Pradnya Brijmohan Bhattad¹, Vinay Jain²

¹ Resident, Department of Internal Medicine, East Tennessee State University, Tennessee (TN), USA

² Attending Radiologist, Department of Radiology, James H. Quillen Veterans Affairs Medical Center, Mountain Home, Tennessee (TN), USA

The Electrocardiogram (ECG) here shows ectopic atrial rhythm with accelerated junctional complexes at regular rhythm. There is an incomplete right bundle branch block with nonspecific ST-T wave changes. There are low voltage QRS complexes in the precordial leads since the QRS amplitude in V1 to V6 is less than 10mm. Heart rate is around 66 beats per minute.

Retrograde P waves inverted in the inferior leads II, III, aVF are noted in this ECG. The P waves are upright in the leads aVR and V1. Inverted P waves are usually seen in ectopic atrial and junctional rhythms.



Disclosures: The authors report no external funding source. The authors declare no conflict of interest. This study has not been published anywhere or presented as poster anywhere till date of submission.

***Corresponding author:**
Dr. Pradnya Brijmohan Bhattad
Resident, Department of Internal Medicine, East Tennessee State University, Tennessee (TN), USA
E-mail: pradnyabhattad20@gmail.com