



ECG Focus

JMR 2019; 5(6): 244
November- December
ISSN: 2395-7565
© 2019, All rights reserved
www.medicinarticle.com
Received: 12-11-2019
Accepted: 09-12-2019

Lead Reversal – Beware of ECG Electrode Misplacement

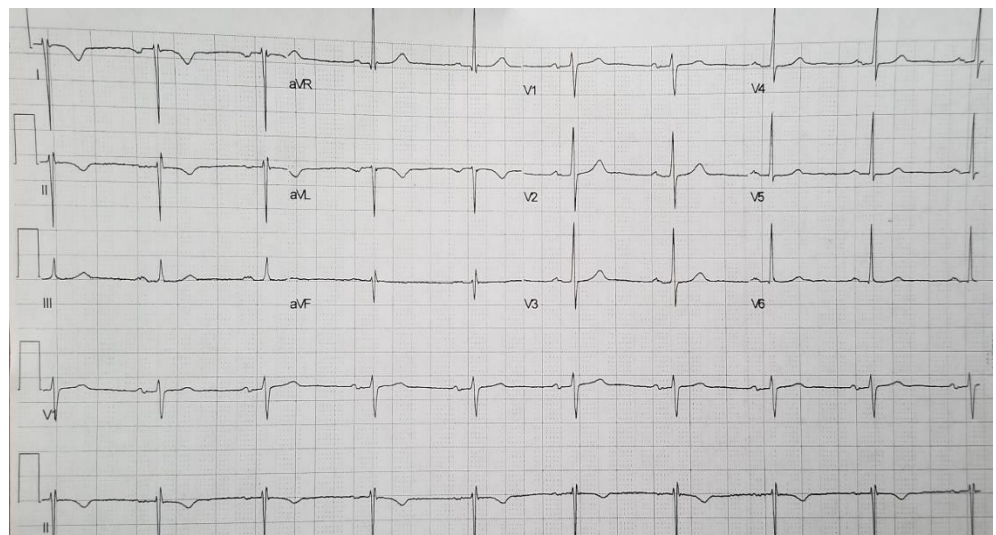
Pradnya Brijmohan Bhattad¹, Vinay Jain²

¹ Resident, Department of Internal Medicine, East Tennessee State University, Tennessee (TN), USA

² Attending Radiologist, Department of Radiology, James H. Quillen Veterans Affairs Medical Center, Mountain Home, Tennessee (TN), USA

Electrocardiogram (ECG) here shows completely inverted P wave, QRS complex and T wave in the Lead I. The P wave, QRS complex and T wave in the lead aVR are positive. There is right axis deviation. These findings suggest left arm/right arm ECG lead reversal.

It must be remembered that the ECG findings in arm lead reversal may mimic those of dextrocardia. However, normal R wave progression in the precordial leads differentiates lead reversal from dextrocardia. Dextrocardia will have absent or poor R wave progression in the precordial leads.



Electrocardiogram showing arm lead reversal

Disclosures: The authors report no external funding source. The authors declare no conflict of interest. This study has not been published anywhere or presented as poster anywhere till date of submission.

***Corresponding author:**
Dr. Pradnya Brijmohan Bhattad
Resident, Department of Internal Medicine, East Tennessee State University, Tennessee (TN), USA
E-mail:
pradnyabhadda20@gmail.com