

ECG Focus

JMR 2019; 5(6): 245
November- December
ISSN: 2395-7565
© 2019, All rights reserved
www.medicinarticle.com
Received: 13-11-2019
Accepted: 13-12-2019

The Right-Sided Electrocardiogram for Right Ventricular Myocardial Infarction

Pradnya Brijmohan Bhattad¹, Vinay Jain²

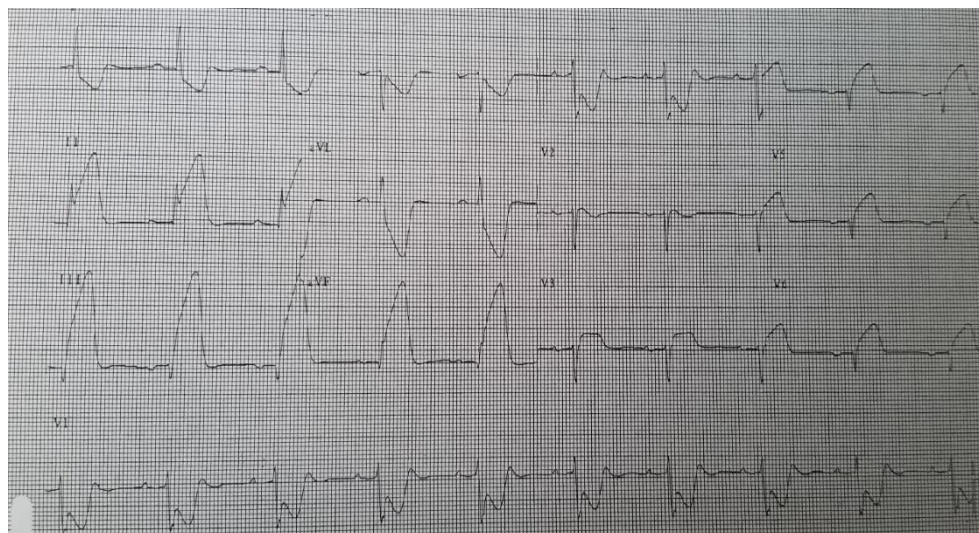
¹ Resident, Department of Internal Medicine, East Tennessee State University, Tennessee (TN), USA

² Attending Radiologist, Department of Radiology, James H. Quillen Veterans Affairs Medical Center, Mountain Home, Tennessee (TN), USA

The electrocardiogram (ECG) here demonstrates a complete set of right-sided ECG leads from V3R- V6R. There is an inferior ST elevation myocardial infarction (STEMI) with ST elevation in lead III greater than ST elevation in lead II. ST elevation can be clearly noted in the right-sided leads V3R-V6R. There is reciprocal ST segment depression in the leads aVL and I.

RVMI usually occurs in the setting of inferior STEMI. The presence of ST elevation in the right-sided leads confirms RVMI. It is important to highlight that the ECG findings in right ventricular myocardial infarction (RVMI) may be missed as the changes may be subtle. As a result, a right-sided ECG helps towards making a timely and an accurate diagnosis especially, when an inferior STEMI is evident.

It is thus beneficial to keep a low threshold to obtain a right sided ECG when RVMI is suspected.



Right-sided electrocardiogram demonstrating inferior ST segment elevation and right ventricular myocardial infarction

***Corresponding author:**
Dr. Pradnya Brijmohan Bhattad
Resident, Department of Internal Medicine, East Tennessee State University, Tennessee (TN), USA
E-mail: pradnyabhattachad20@gmail.com

Disclosures: The authors report no external funding source. The authors declare no conflict of interest. This study has not been published anywhere or presented as poster anywhere till date of submission.